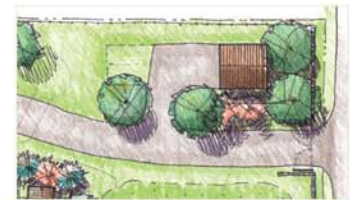


GREENLAWN CEMETERY



N A H A N T , M A S S A C H U S E T T S

HALVORSON DESIGN
PARTNERSHIP



Initial Siteplan

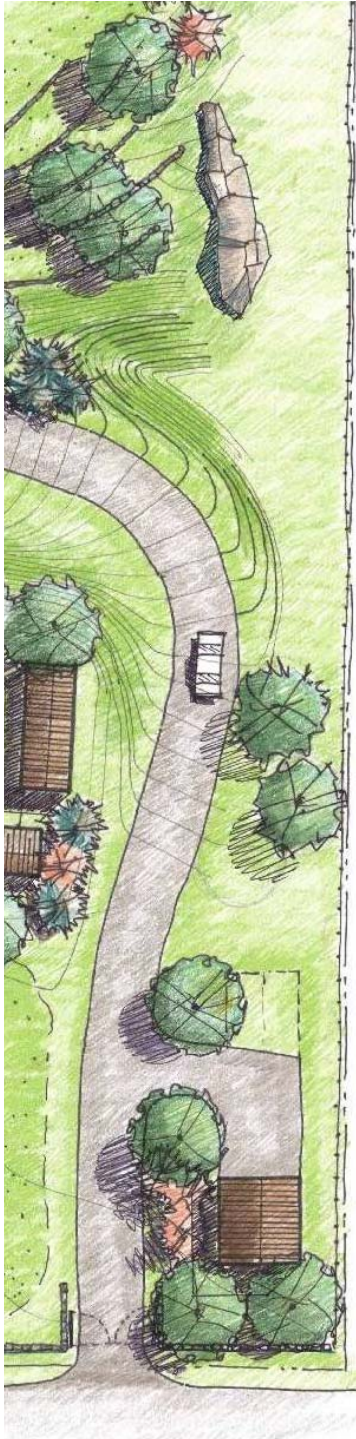
- Hancock Associates November 2006

Design Process

- Schematic Design
 - Scheme A and B
 - Final Scheme
- Cemetery Visits
 - Mount Auburn - Cambridge
 - Highland Meadow – Belmont
- Design Development
 - Project Team
 - Memorializing
 - Plot Layout Plan
 - Caretaker's Building Design

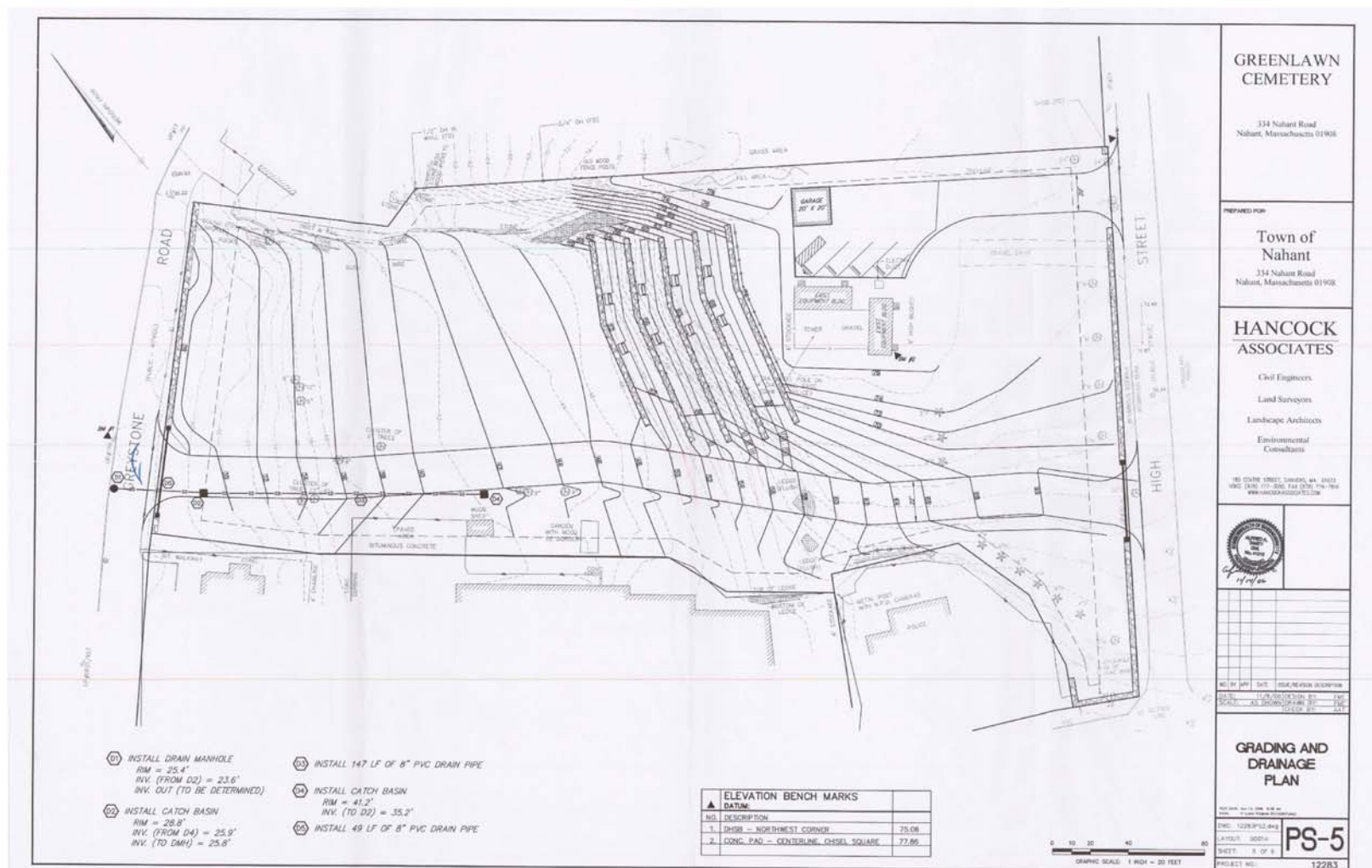
Next Steps

Project Schedule



Hancock Plan

Completed November 2006



Design Process

Schematic Design





Scheme A



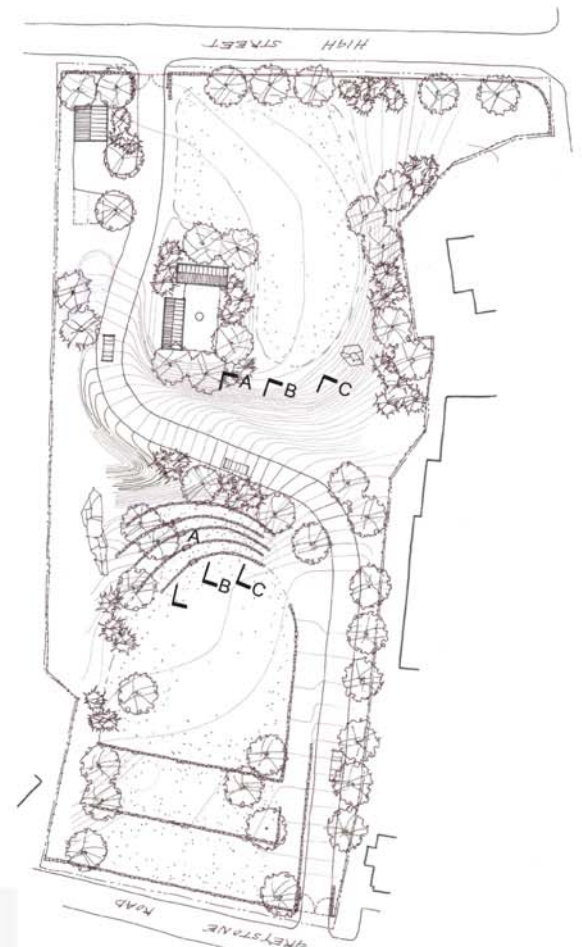
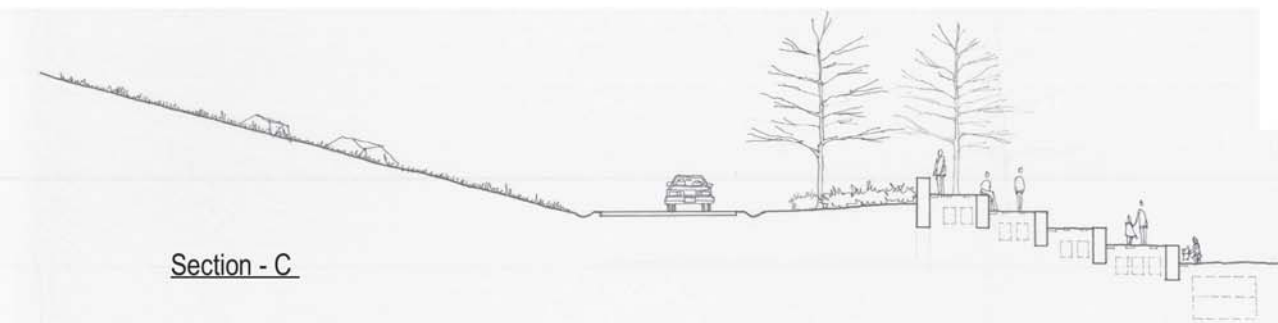
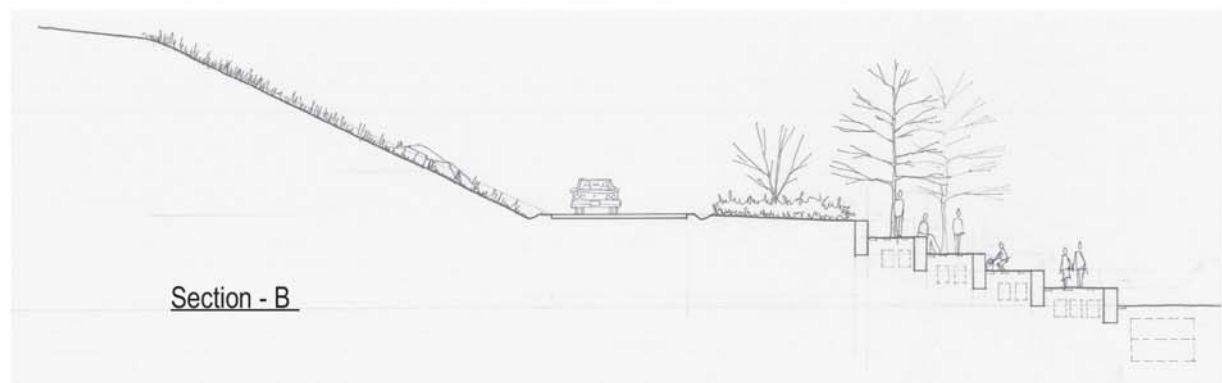
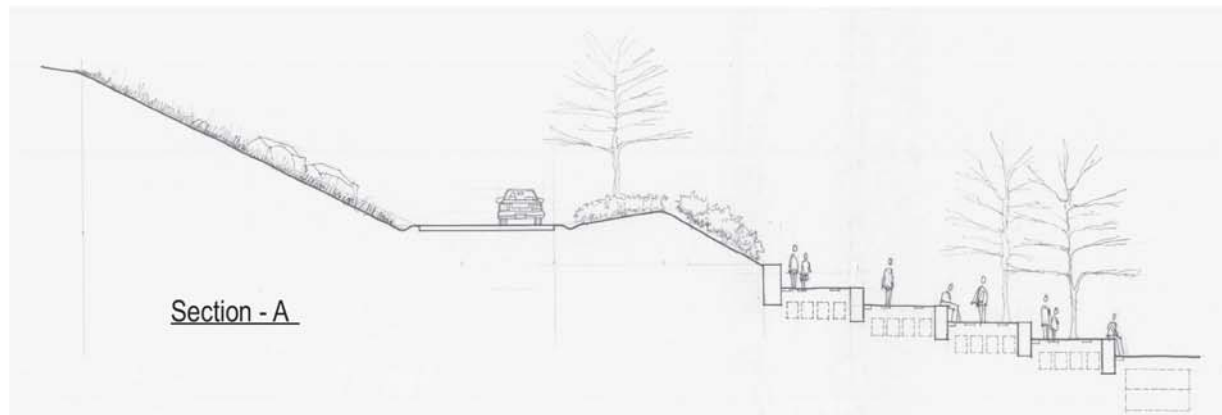
Scheme B



Greenlawn Cemetery - Nahant, MA

Siteplan

HALVORSON DESIGN
PARTNERSHIP



Greenlawn Cemetery - Nahant, MA

Memorial Terrace Sections

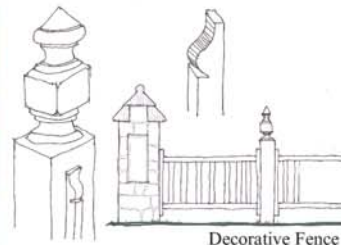
HALVORSON DESIGN
PARTNERSHIP



Building Concepts



Stone Pier



Decorative Fence



Wood Post



Memorial Terrace



Free Standing Bench

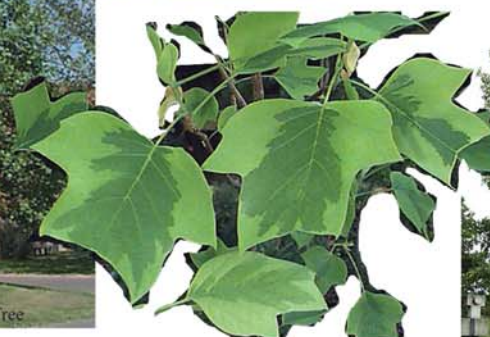
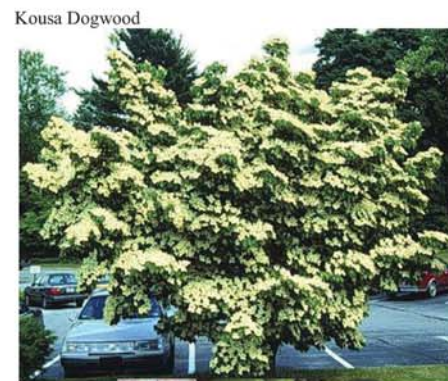


Stone Walls/ Stone Benches

Greenlawn Cemetery - Nahant, MA

Building, Walls, Seating, and Fencing

HALVORSON DESIGN
PARTNERSHIP



Greenlawn Cemetery - Nahant, MA

Plant Palette

HALVORSON DESIGN
PARTNERSHIP



Cemetery Visits

Mount Auburn Cemetery

Highland Meadow



Highland Meadow Cemetery
Belmont, MA



Mount Auburn Cemetery
Cambridge, MA

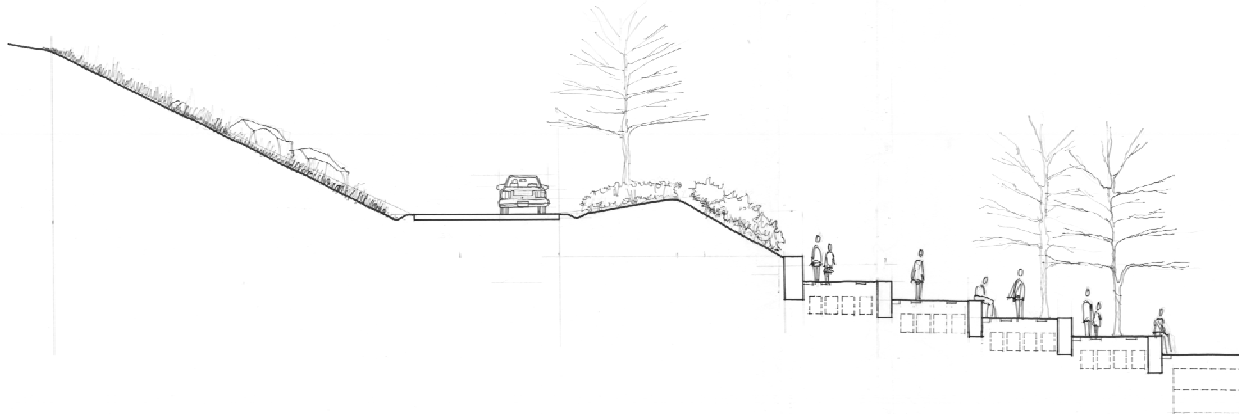


Design Development



Project Design Team

- Halvorson Design Partnership, Inc.
 - Landscape Architect
- Menders, Torrey & Spencer, Inc.
 - Caretaker's Building Architect
- Mistry Associates, Inc.
 - Site Structural Engineer, Civil Engineer
- Pine and Swallow Associates
 - Soils Scientists





Halvorson Design Partnership

Memorializing and Plot Layout



Memorial Sculpture

Determine:
Height restrictions
Footprint sizes
Material parameters



Use of Walls for Memorializing

Determine
Text size limits
Text parameters



Cremation Markers

Determine
Size limits
Material parameters



Benches



Plants

Memorial Elements - plants, benches, etc.

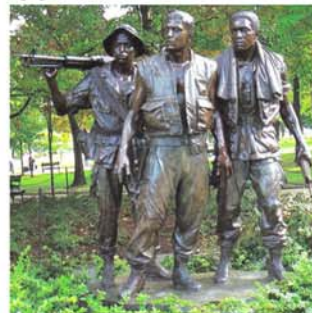
Determine
Acceptable elements
Develop master plan of elements and locations



Flush Memorial



Upright Memorial



Sculptural Memorial

Veterans' Memorial

Determine
General parameters for designer to follow
Location



Shared Flush Marker



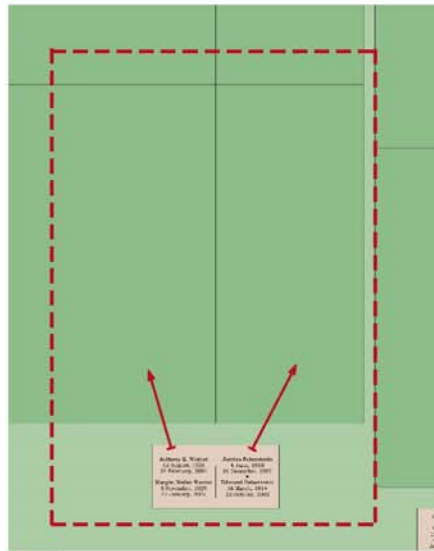
Single Flush Marker



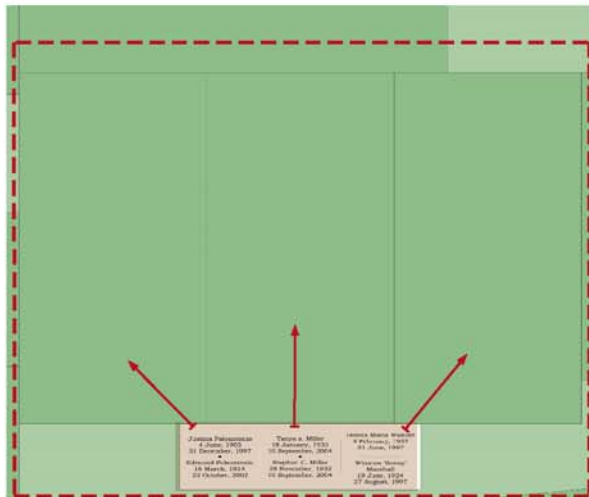
Upright Marker

Markers

Determine
Size limits
Material
Shared
Flush or upright



Flush Marker for Two Plots
Four Names Per Marker



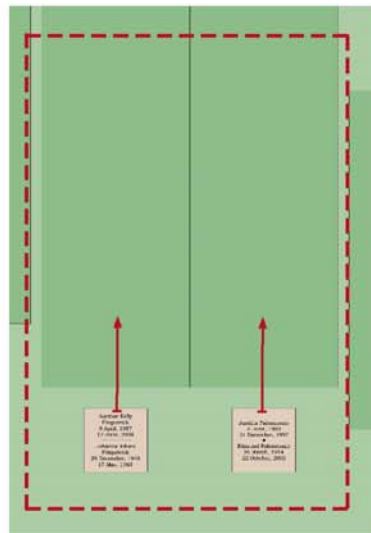
Flush Marker for Three Plots
Six Names Per Marker



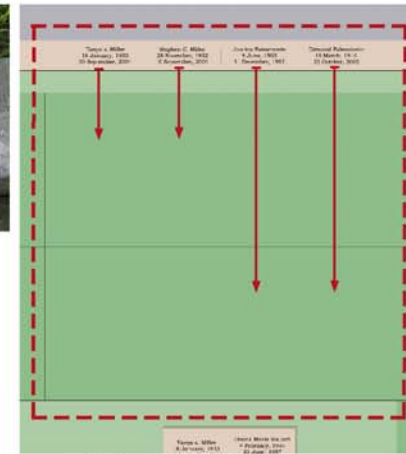
Flush Marker for One Plot



Ledger Marker



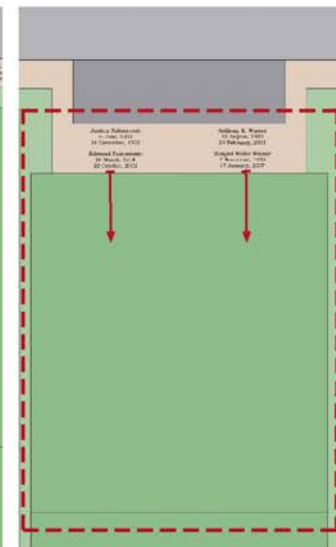
Flush Marker for One Plot
Two Names Per Marker



Wall Base - Parallel to wall



Wall Base -
Perpendicular to Wall



Memorial Bench

Ledger Marker

One Row of Names at Wall Base
Two Rows of Names at Memorial Bench



Traditional Monument for Family Plot

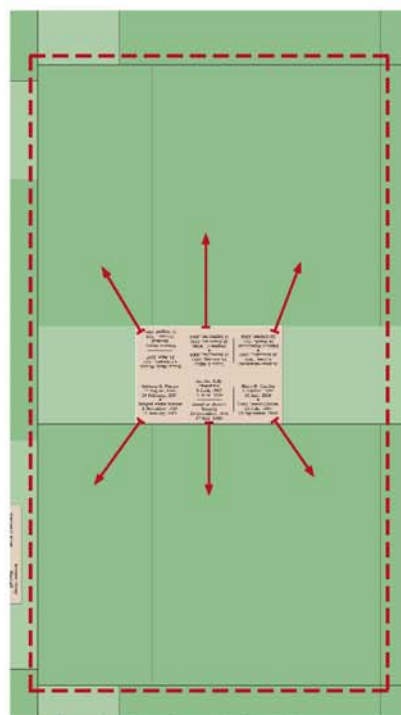


Contemporary Monument for Family Plot

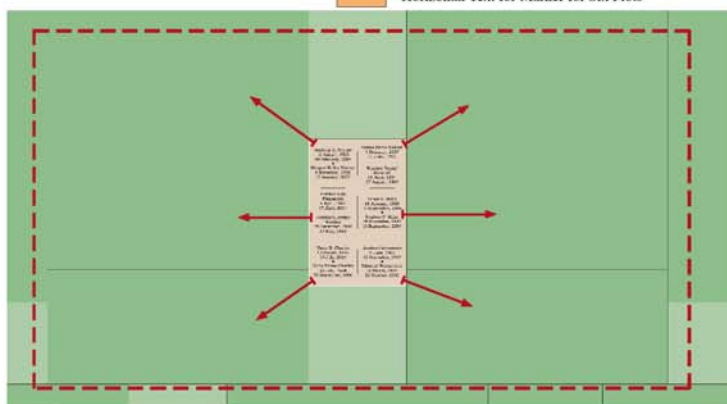
Marker for Family Plots
For Four or Six Plot Markers



Flush Marker for Six Plots



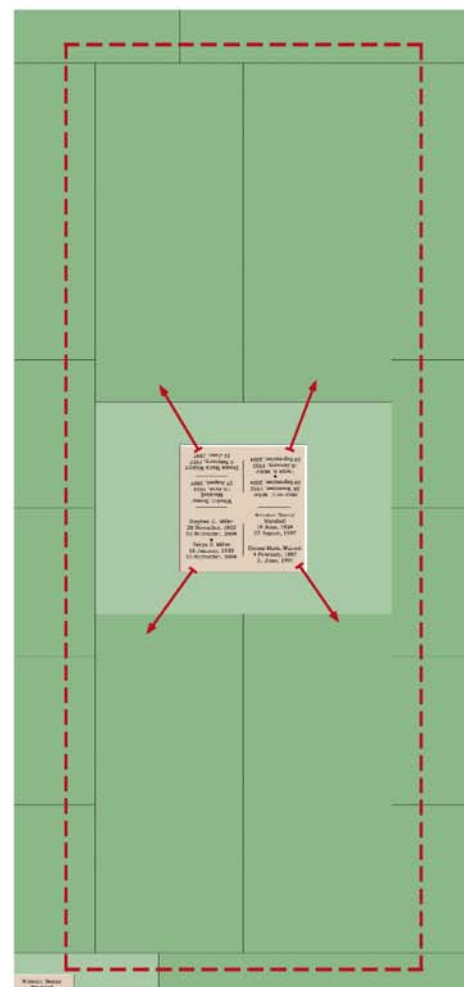
Horizontal Text for Marker for Six Plots



Vertical Text for Marker for Six Plots

Marker for Six Plots

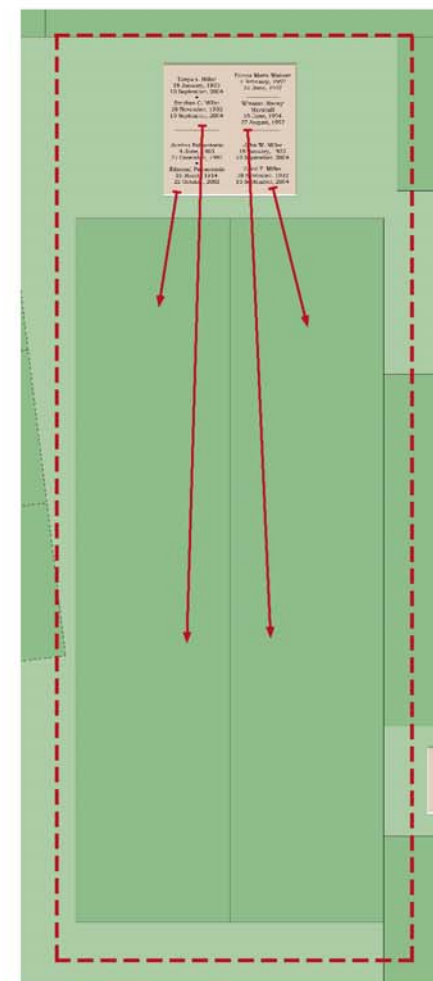
Twelve Names Per Marker



Central Marker for Four Plots

Flush Marker for Four Plots

Eight Names Per Marker



Outer Marker for Four Plots

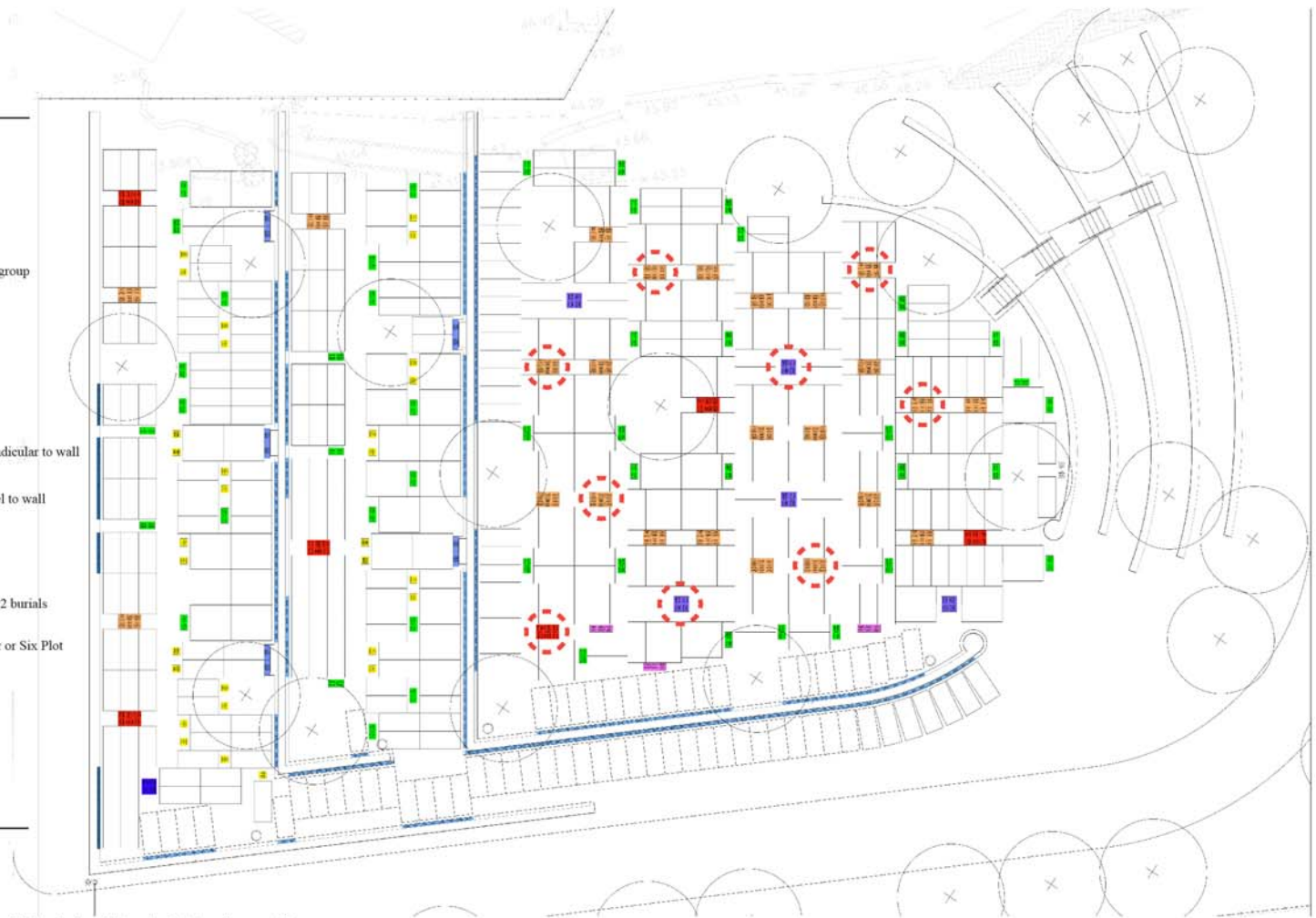
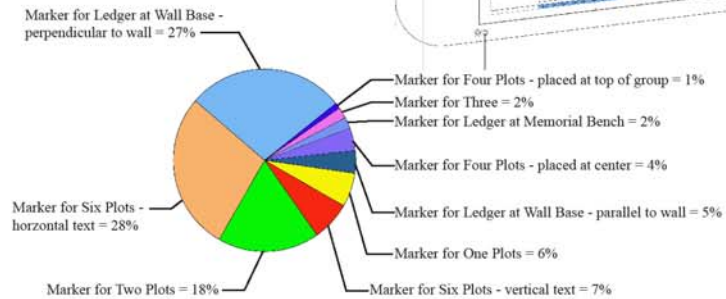
Legend for Marker Type

- Marker for Six Plots - vertical text
6 stones = 36 plots
- Marker for Six Plots - horizontal text
24 stones = 144 plots
- Marker for Four Plots - placed at center
5 stones = 20 plots
- Marker for Four Plots - placed at top of group
1 stones = 4 plots
- Marker for Two Plots
48 stones = 96 plots
- Marker for One Plots
30 stones = 30 plots
- Marker for Three
3 stones = 9 plots
- Marker for Ledger at Wall Base - perpendicular to wall
136 plots
- Marker for Ledger at Wall Base - parallel to wall
26 plots
- Marker for Ledger at Memorial Bench
10 plots

Total Double Depth Lawn Crypt Plots - 511 = 1,022 burials

- Marker for Family Plot - Non-flush Four or Six Plot Markers

Disstribution of Marker Types By Percentage



Greenlawn Cemetery - Nahant, MA

Standards for Greenlawn - Plot Layout Plan for Lower Grounds

HALVORSON DESIGN
PARTNERSHIP



Flush Marker for One Plot



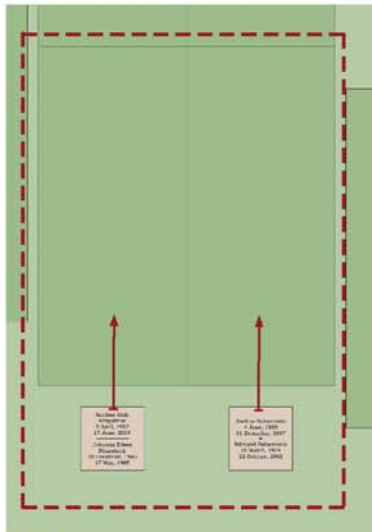
Ledger Marker



Contemporary Monument for Family Plot



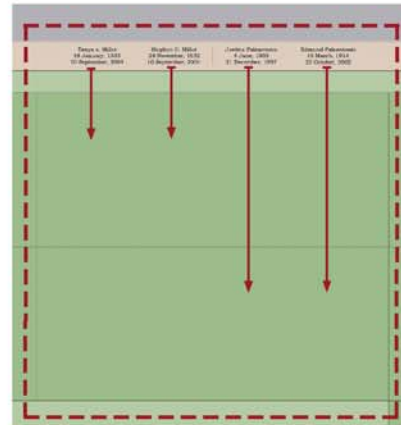
Traditional Monument for Family Plot



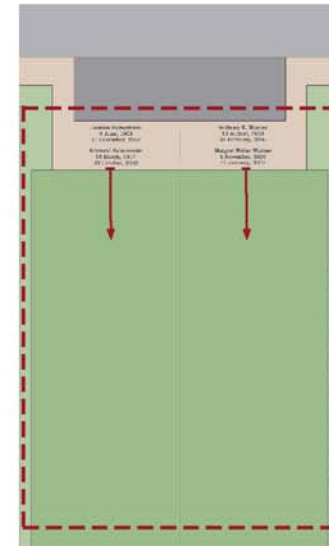
Flush Marker for One Plot
Two Names Per Marker



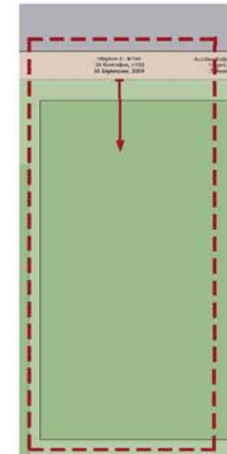
Wall Base - Double Depth
Perpendicular to Wall



Wall Base - Double Depth
Parallel to wall



Memorial Bench - Double Depth



Wall Base - Single Depth
Perpendicular to Wall

Legend for Marker Type

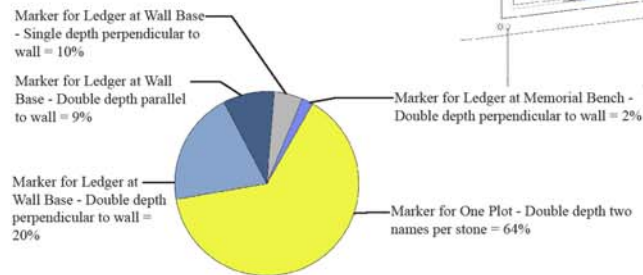
- Marker for One Plot - Double depth two names per stone - 311 plots
- Marker for Ledger at Wall Base - Double depth perpendicular to wall - 106 plots
- Marker for Ledger at Wall Base - Double depth parallel to wall - 44 plots
- Marker for Ledger at Memorial Bench - Double depth perpendicular to wall - 10 plots
- Marker for Ledger at Wall Base - Single depth perpendicular to wall - 24 plots

Total Double Depth Lawn Crypt Plots - 461 = 922 interments
 Total Single Depth Lawn Crypt Plots - 24 = 24 interments
 Total = 946 interments
 (previous study = 1,022 interments)

Location of Vertical Marker - Non-flush monument



Disstribution of Marker Types By Percentage



Menders, Torrey & Spencer

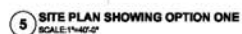
Caretaker's Building





members, torrey & spencer, inc.
architecture • preservation

123 North Washington Street
Boston, MA 02114
T 617.227.1477
F 617.227.2884
www.torreyandspencer.com

[illegible]

PLAN
OPTION ONE

Drawing Issued By:	
Drawn By:	Drawing No.
Checked	A-101
Scale	
Date	



GREENLAWN CEMETERY'S BUILDING

HALVORSON DESIGN
PARTNERSHIP

133 North Washington Street
Boston, MA 02114
1.817.227.1477
www.hdvorsondesign.com

partners, turnkey & spencer, inc.
architecture • preservation
133 North Washington Street
Boston, MA 02114
1.817.227.1477
www.hdvorsondesign.com

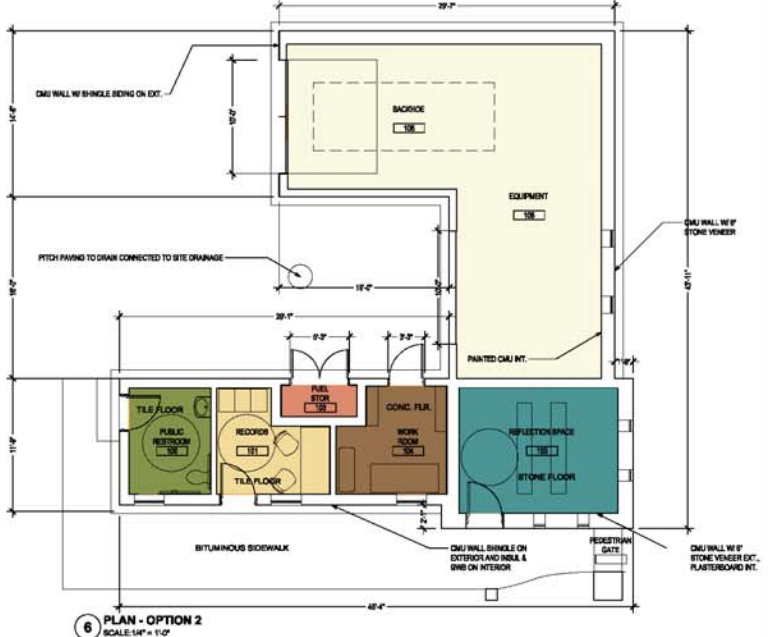
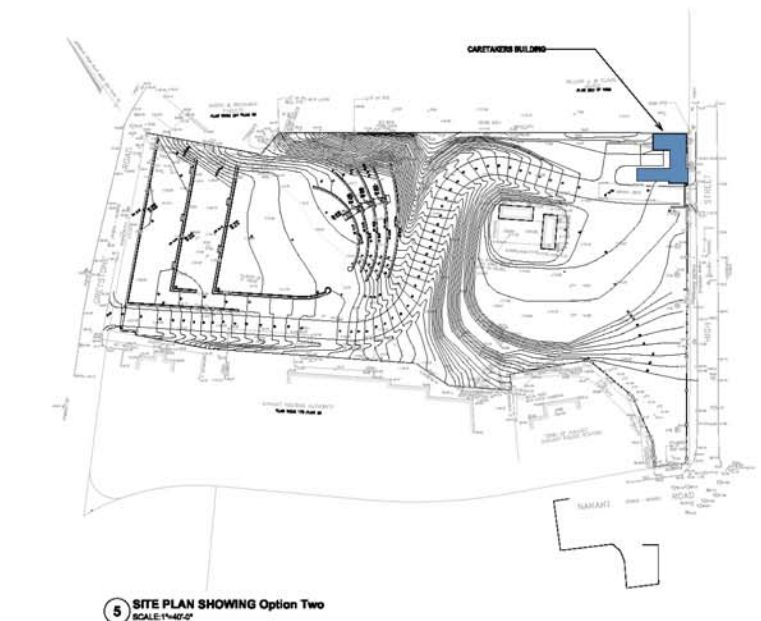
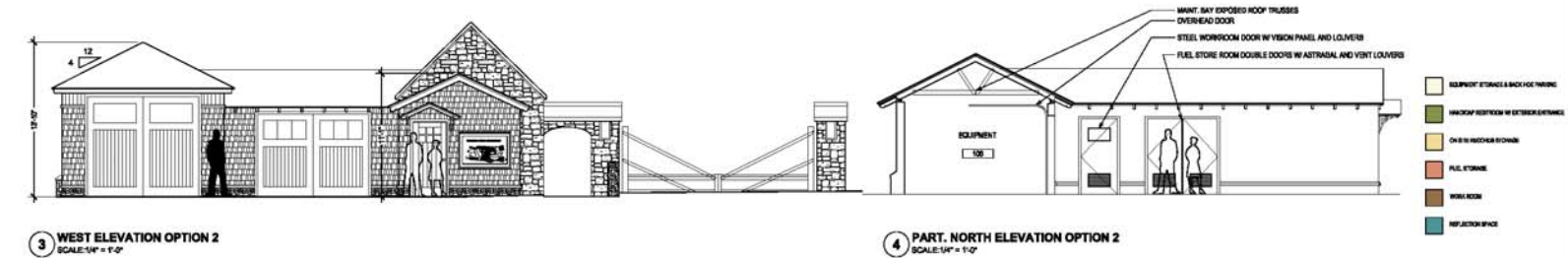
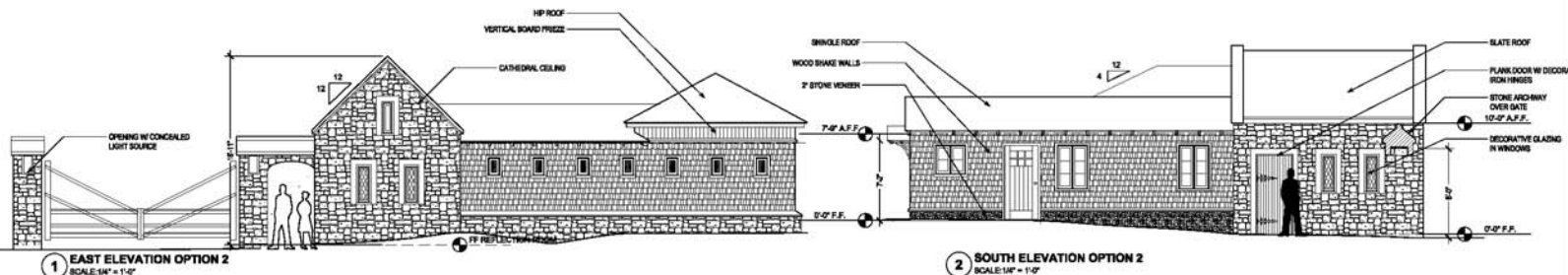
Revisions

No.	Description	Date

PLAN OPTION TWO

Drawing Issued By:
Drawn By: _____
Checked: _____
Scale: _____
Date: _____

Drawing No.
A-102





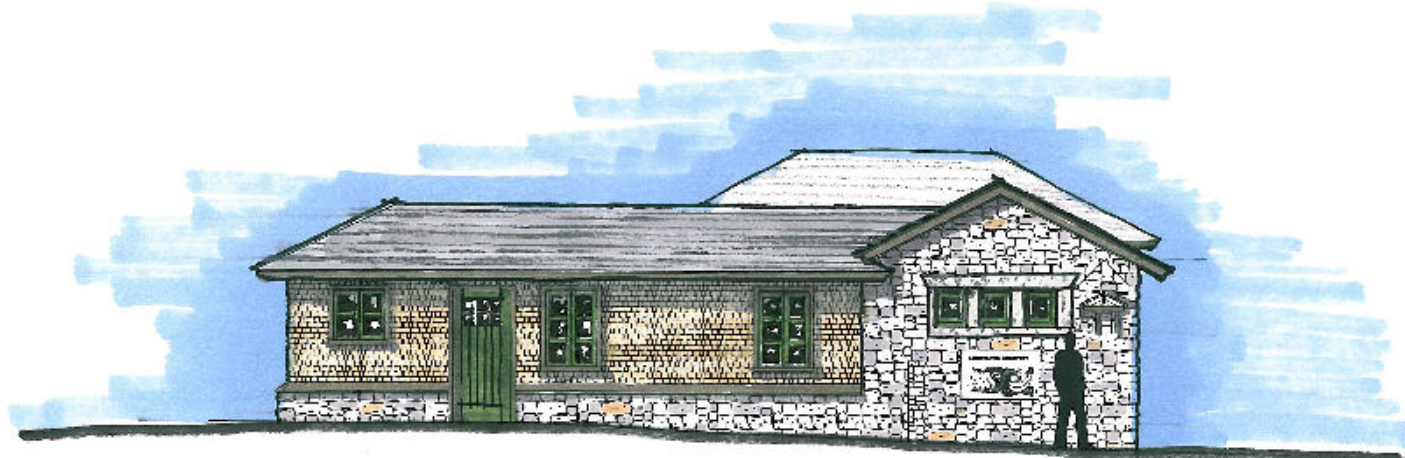
**GREENLAWN
CEMETERY
GARETAKER'S
BUILDING**

HAUVRON DESIGN
ARCHITECTS
1000 NE 10TH AVE, SUITE 100
PORTLAND, OREGON 97232
503.281.1111
www.hauvrongroup.com

DESIGNED BY: HAUVRON DESIGN
ARCHITECTS
1000 NE 10TH AVE, SUITE 100
PORTLAND, OREGON 97232
503.281.1111
www.hauvrongroup.com



1 EAST ELEVATION OPTION 2
SCALE: 1/8" = 1'-0"



2 SOUTH ELEVATION OPTION 2
SCALE: 1/8" = 1'-0"

REVISIONS

NO.	DESCRIPTION	DATE

**PLAN
OPTION TWO**

DRAWING BY:	
DESIGNED BY:	DRAWN BY:
CHECKED BY:	DATE:
SCALE:	PROJECT NO.:
TITLE:	

A-103



**GREENLAWN
CEMETERY
CARETAKER'S
BUILDING**

HADWORTH DESIGN
ARCHITECTS

111 AMHERST AVENUE, SUITE 100, GREENLAWN, NY 11749
TEL: 516.466.8800 FAX: 516.466.8801

residential, commercial, and industrial

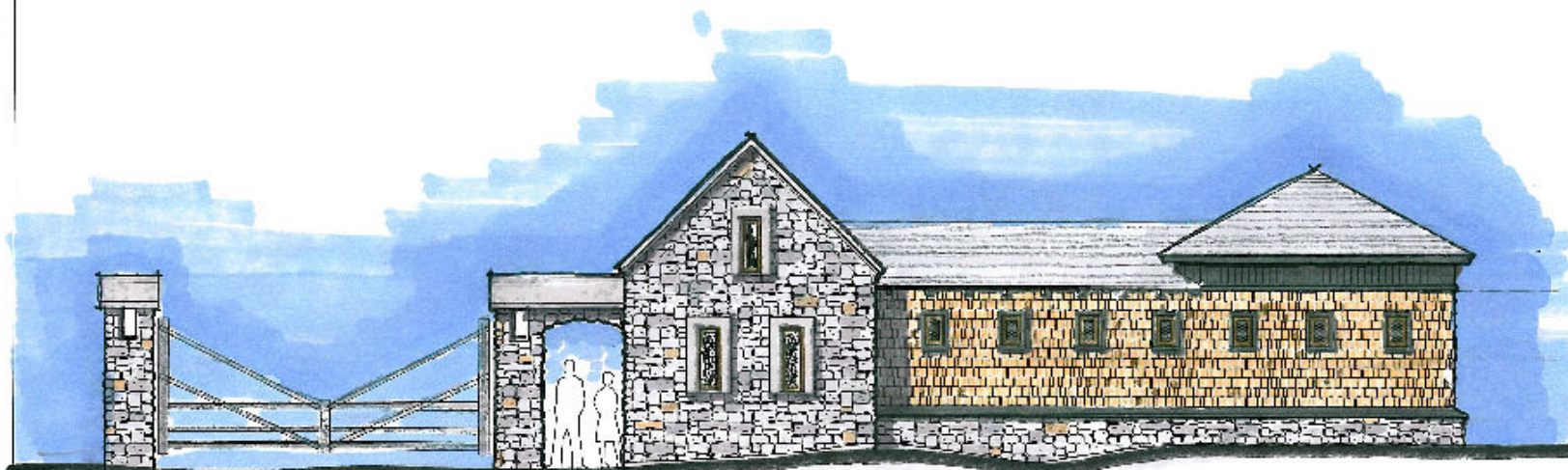
www.hadworthdesign.com

50, New Street, Suite 100, Greenlawn, NY 11749

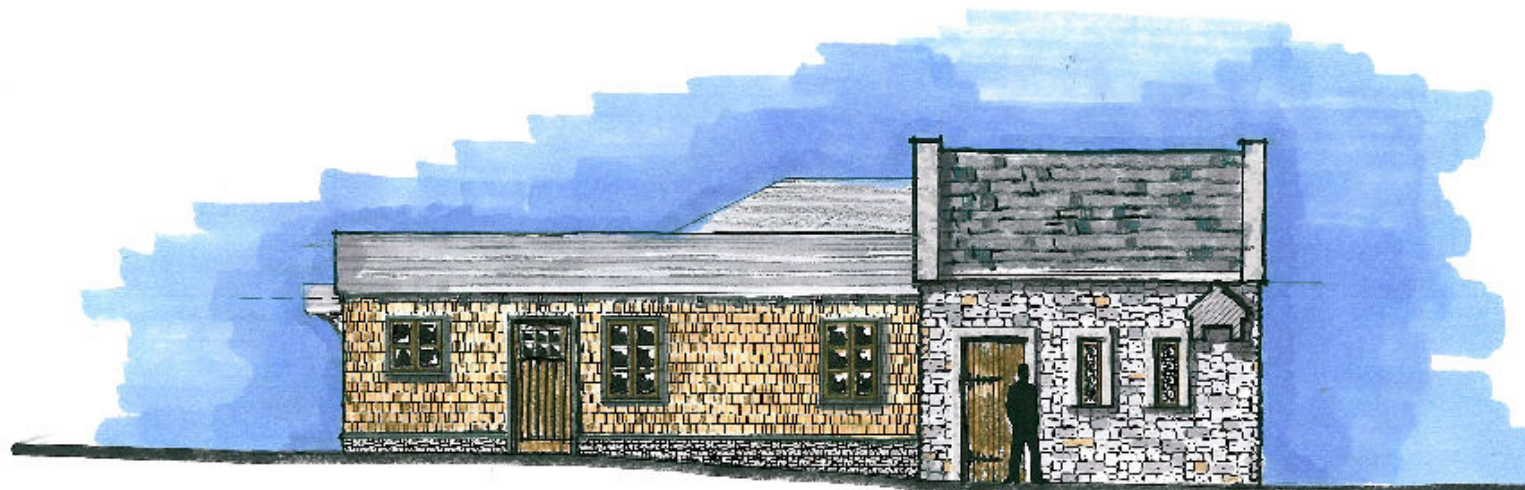
516.466.8800

516.466.8801

www.hadworthdesign.com



① EAST ELEVATION OPTION 2
DATE: 10/1/12



② SOUTH ELEVATION OPTION 2
DATE: 10/1/12

Revisions

No.	Description	Date	By

**PLAN
OPTION TWO**

Drawn by:	Checked by:
Scale:	Scale:
Date:	Date:
Sheet:	Sheet:

A-104

Next Steps

- Complete Design Development
- Commence Construction Documents
- Town Meeting
- Bidding
- Construction

Schedule

- January 31 - Complete Design Development
- April 15 – Construction Documents 50%
- June 15 – Construction Documents 100%
- Winter 2008/ Spring 2009 – Begin Construction

